

a
tion

for indoor

Linetta collection

Contemporary colours with a linen effect for stylish indoor upholstery



Midnight

Perfect for
Hotels / Leisure /
Commercial /
Healthcare /
Cruise Liners

Use for
Interior Seating /
Headboards /
Panels



REACH Compliant

Fabric Specifications

Flame retardant	Upholstery: BS7176 Crib 5, BS EN 1021-1:2006 0 & 1, IMO Resolution A652 (16), M2
Anti-bacterial/ Anti-fungal	Resistant to microbial or fungal growth including Salmonella, E Coli and MRSA
Waterproof	Hydrostatic Head BS3424 > 1 metre
Martindale abrasion	> 100,000
Stain resistant	Excellent stain removal has been observed for grease, ink, blood, urine, coffee, iodine, betadine, ketchup, chewing gum, chocolate, grape juice
Composition	100% treated polyester. 140 cm (55") wide
Making up	We recommend a minimum of 32 stitches per 10cm (8 stitches per inch) and seams must have a minimum 12mm (0.5") bite on the fabric. Not suitable for use as removable covers.

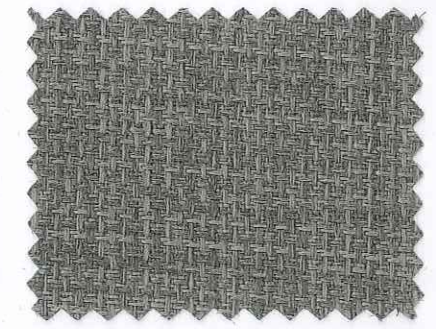
Linetta can be colour co-ordinated with Taurus, Paint Pot, Aries and Lunar collections to produce stunning furniture with dual textured finishes. Please note that all fabric offered is subject to minor tolerance in respect of shade and other slight variations.

Technical specifications may be amended, please check for the latest information.

Linetta



Orchid



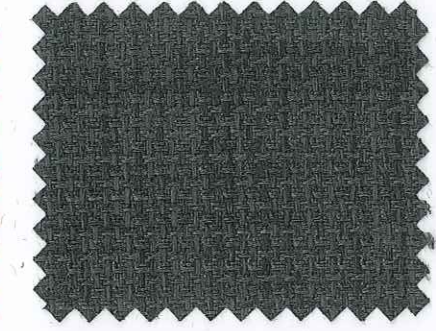
Slate



Cream



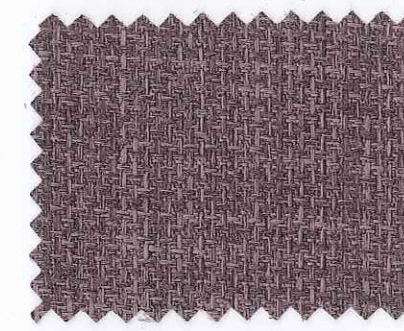
Red



Charcoal



Sand



Grape



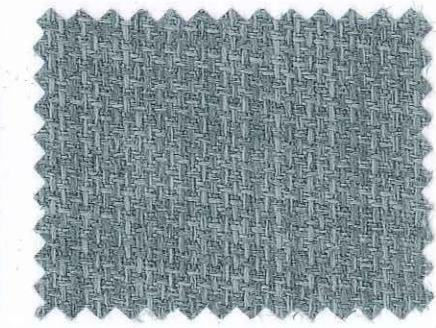
Lime



Gold



Purple



Duck Egg



Chocolate



Plum

For further information and samples contact Agua Fabrics

T +44 (0)20 8205 0050

F +44 (0)20 8205 0660

E samples@aguafabrics.com

www.aguafabrics.com

Contemporary colours with a linen effect for stylish indoor upholstery



Midnight

Perfect for
Hotels / Leisure /
Commercial /
Healthcare /
Cruise Liners

Use for
Interior Seating /
Headboards /
Panels



REACH Compliant

Fabric Specifications

<i>Flame retardant</i>	Upholstery: BS7176 Crib 5, BS EN 1021-1:2006 0 & 1, IMO Resolution A652 (16), M2
<i>Anti-bacterial/ Anti-fungal</i>	Resistant to microbial or fungal growth including Salmonella, E Coli and MRSA
<i>Waterproof</i>	Hydrostatic Head BS3424 > 1 metre
<i>Martindale abrasion</i>	> 100,000
<i>Stain resistant</i>	Excellent stain removal has been observed for grease, ink, blood, urine, coffee, iodine, betadine, ketchup, chewing gum, chocolate, grape juice
<i>Composition</i>	100% treated polyester. 140 cm (55") wide
<i>Making up</i>	We recommend a minimum of 32 stitches per 10cm (8 stitches per inch) and seams must have a minimum 12mm (0.5") bite on the fabric. Not suitable for use as removable covers.

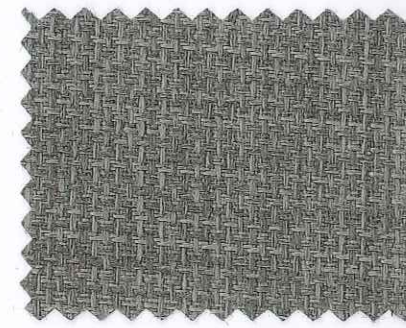
Linetta can be colour co-ordinated with Taurus, Paint Pot, Aries and Lunar collections to produce stunning furniture with dual textured finishes. Please note that all fabric offered is subject to minor tolerance in respect of shade and other slight variations.

Technical specifications may be amended, please check for the latest information.

Linetta



Orchid



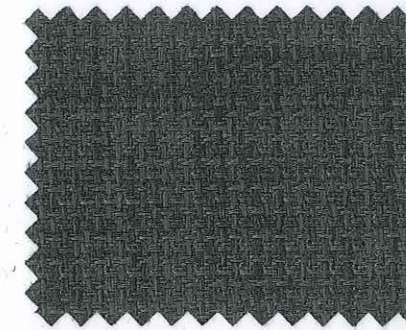
Slate



Cream



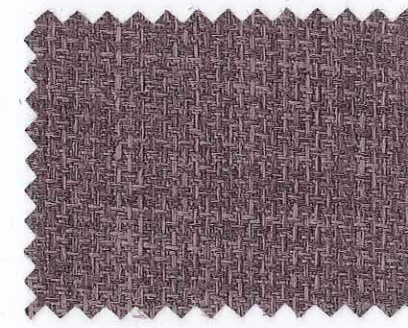
Red



Charcoal



Sand



Grape



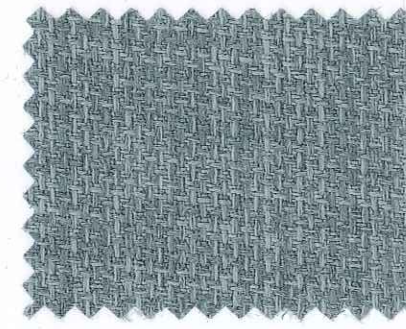
Lime



Gold



Purple



Duck Egg



Chocolate



Plum

For further information and samples contact Agua Fabrics

T +44 (0)20 8205 0050
F +44 (0)20 8205 0660
E samples@aguafabrics.com
www.aguafabrics.com